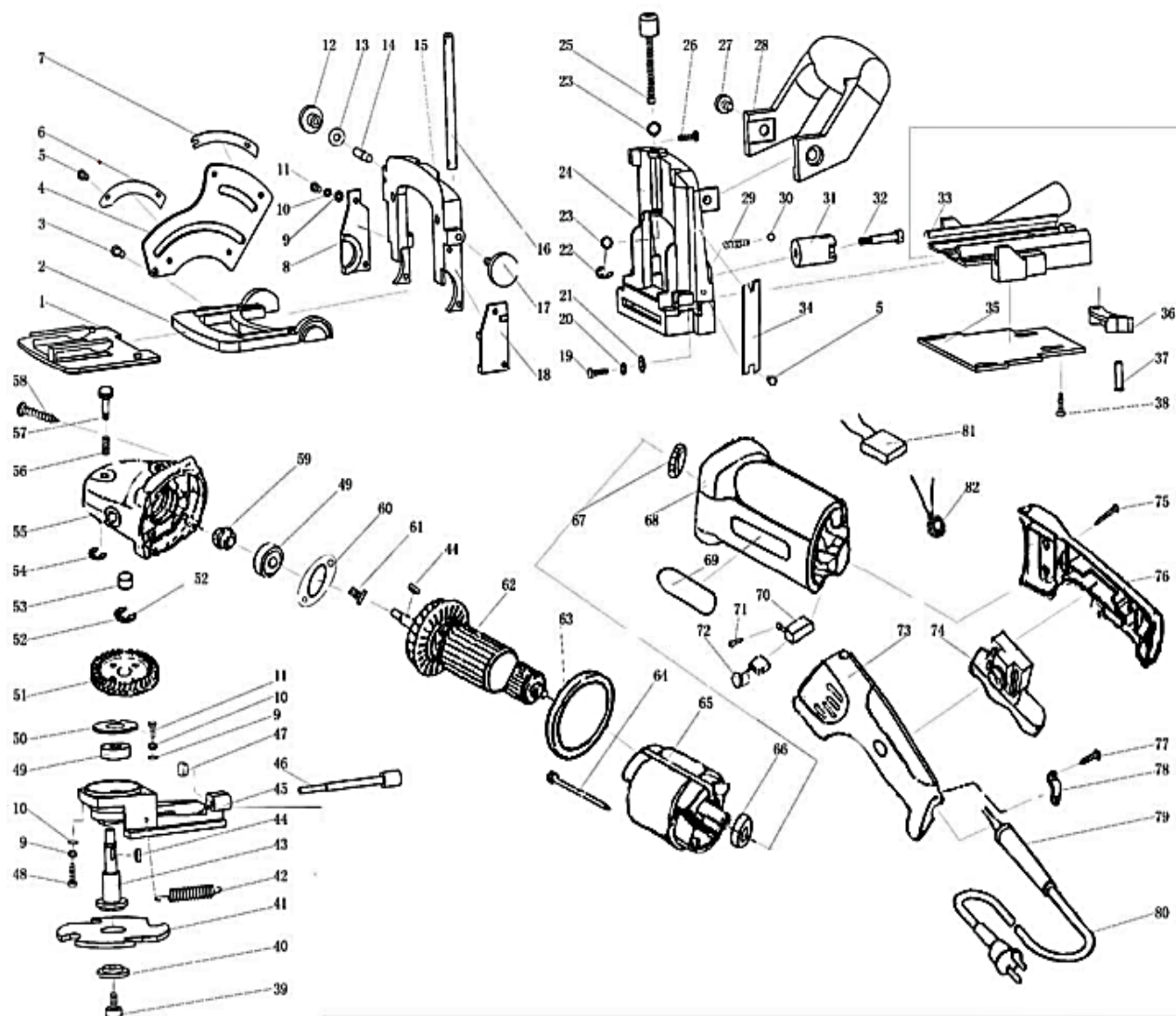


BJ02 - EXPLODED VIEW AND PARTS LIST



NOTICE:

The parts listed and displayed in this exploded view are for the tool service only. It is not indicated that all of them can be supplied or is available. Technical changes might be made without any prior notification.

Spare parts are only available in the corresponding service kits as offered by Tork Craft.

This tool carries the Tork Craft warranty (consult dealer for more information).

Parts list for BJ02 – BISCUIT JOINTER

Ref	Description	Qty		Ref	Description	Qty
1	Pillow board	1		42	Restoration spring	2
2	Turning board	1		43	Spindle	1
3	Locking screw (screw board)	1		44	Woodruff key 3X10	2
4	Scale board	1		45	Fore cover	1
5	Screw M3X3.5	6		46	Limit screw (circlip for shaft4)	1
6	Ruler (1)	1		47	Nut M6	1
7	Ruler (2)	1		48	Screw M4X18	4
8	Orientation board (left)	1		49	Bearing 6000-2Z	2
9	Plain washer 4	4		50	Bearing cover	1
10	Spring washer 4	4		51	Big gear	1
11	Screws M4X10	4		52	Circlip for shaft 9	1
12	Nut of handle	1		53	Oil bearing	1
13	Plain washer 6	1		54	Circle for shaft 6	1
14	Locking screws (screw board)	1		55	Gear box	1
15	Moving board	1		56	Self-locking spring	1
16	Guide pole	2		57	Self-locking pin (whole)	1
17	Screw	1		58	Self-tapping screw 4X22	4
18	Orientation board (right)	1		59	Pinion gear	1
19	Screw M5X22	2		60	Bearing cover	1
20	Spring washer 5	2		61	Tapping screw M4X10	5
21	Plain washer 5	2		62	Rotor	1
22	Circlip for shaft 4	1		63	Wind guard	1
23	Plain washer 6	2		64	Self-tapping screw 4X70	2
24	Anxious rack	1		65	Stator	2
25	Regulate screw	1		66	Bearing 627-2Z	1
26	Tapping screw M4X18	4		67	Bearing bushing	1
27	Hex screw M8X12	2		68	House	1
28	Assistant handle	1		69	Trade mark	1
29	Spring (limit)	1		70	Brush holder	2
30	Steel ball ø5	1		71	Self-tapping screw 3X8	2
31	Limit block	1		72	Carbon brush	2
32	Screw	1		73	Left handle	1
33	Base	1		74	Switch	1
34	Ruler (3)	1		75	Self-tapping screw 4X18	4
35	Base cover	1		76	Right handle	1
36	Block	1		77	Self-tapping 4X14	2
37	Pin (limit)	1		78	Cable pressboard	1
38	Tapping screw M5X12	4		79	Cable armor	1
39	Hex screw M6X16	1		80	Cable	1
40	Saw cover	1		81	Capacitor 0.22uF	1

41	Saw	1		82	Inductance 80uH	2
----	-----	---	--	----	-----------------	---